

Summer Assignments 2026

AP Drawing/AP 2D: Complete three, Drawing 3/Painting 3: Complete two

Due: third day drawing/painting class meets, August 2026

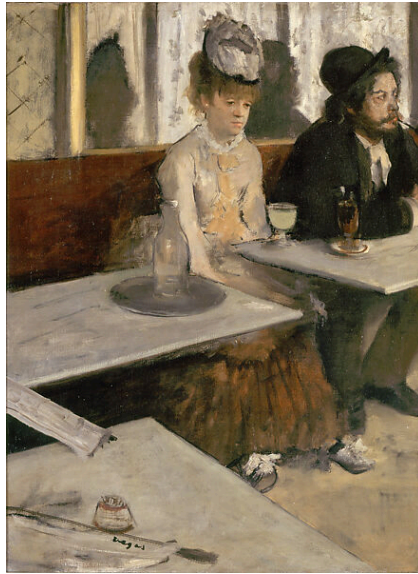
Read through the following prompts and select 3 (AP studio) or 2 (Draw/Paint 3) to complete. You may NOT use the same prompt for multiple artworks. All works need to be thoughtfully composed and have a sense of maturity about them. A mastery of media and composition, as well as elements and principles of art and design must be evident. All areas of artwork (foreground, middle ground and background) should be well developed and completed as the work is completed. Mark making, brushwork, value differences and craftsmanship will be heavily considered when assessing the works. **All assignments must be at least 18" X 24"** unless otherwise specified. Works must be on an appropriate support surface, such as stretched canvas or heavy weight paper. **No canvas board.** You may take home paper from your studio class. This assignment will be posted on Google Classroom as well.

Figure in a space

Create an artwork of a figure interacting within a space that is meaningful to them. For example, show your mom at her favorite restaurant, or your friend who loves to read at a bookstore. The figure should interact in the space in an engaging way. Other figures may be included. Media and style are up to you, but composition and lighting should be carefully considered, and perspective must be accurate.



Mary Cassatt



Edgar Degas



Salman Toor

Messy Room

Create an artwork depicting your messy room showing a high level of detail. You may choose to include a figure. Perspective must be highly accurate and composition should be carefully considered. Media is your choice.



Jurrell Cayetano

Family of Shoes

Create a color rendering of a still-life arrangement consisting of your family member's shoes—try to convey some sense of each of your individual family member's distinct personalities in your piece. Mark-making is very important for juniors, and composition is very important for seniors. Acrylic paint.



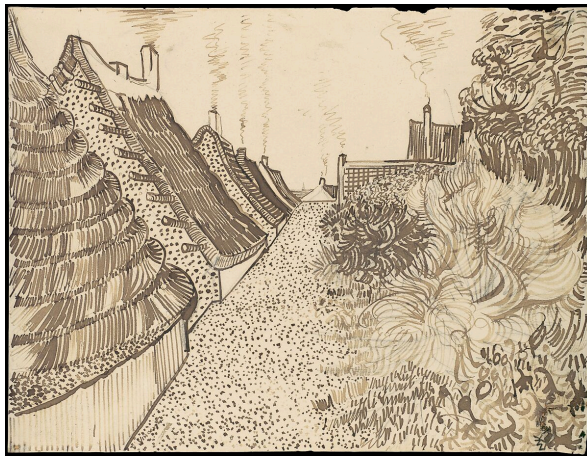
Vincent Van Gogh

Expressive Linework

Create an artwork which demonstrates expressive linework. Think about how the use of mark-making can contribute to the modeling of form and/or the expressing of emotions. Subject matter is your choice, but you should consider how mark-making can enhance your imagery. Your finished work should be fully developed, with carefully considered use of positive and negative space.



Alberto Giacometti



Vincent Van Gogh



LaToya Hobbs

Cityscape VS Landscape VS Indoor/Outdoor

Complete an artwork that is an urban landscape, rural landscape or an outdoor scene that you can see through a window, building opening or door or vice versa, from outside to inside. The painting or drawing must use full color and include a foreground background and middle ground. Please layer the work, use placement of objects and size to establish a sense of depth. Draw and paint the landscape from life, use nature as inspiration and do not make up your scene.



Gillian Richards



Andrew Wyeth



Richard Estes

Night Scene With Color: You are to make a night time painting or drawing of a landscape that includes a building or man-made object of some kind. It can include people if you wish. Make sure that the work utilizes highly contrasting values/lights/darks and takes advantage of specific light sources, whether the light source is natural or artificial. The composition must use color in an effective and expressive way. Black should be used sparingly.



Maximilian Luce



Childe Hassam



Edward Hopper